



# EDGE MAP SOFTWARES

Geographical Information Systems (GIS)

For Potable water and Wastewater



## Benefits

- Asset Inventory and Infrastructure Insights
- Easily calculate rate of consumption of residential households
- Leak Detection
- Less turnaround time
- Reduction in labor cost
- Optimizing Field Operations
- Collaborating and Sharing Geospatial Data with other Departments
- Sharing Data with Clients, Subcontractors and Managers

## CONTACT US

### Edgemap Softwares

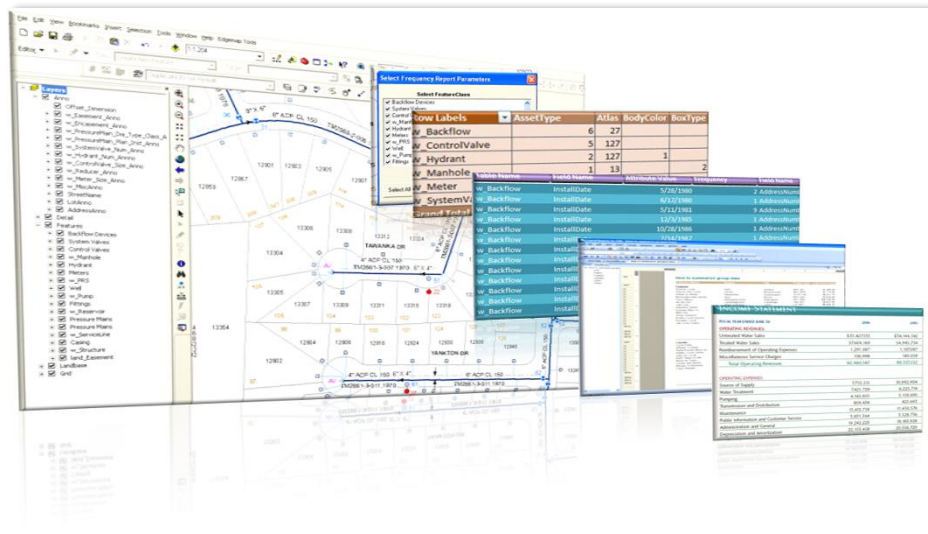
#352, 4<sup>th</sup> Block, 8<sup>th</sup> Main  
Basaveshwaranagar,  
Bangalore-560079

 [www.edgemapgis.com](http://www.edgemapgis.com)

 [info@edgemapgis.com](mailto:info@edgemapgis.com)

 +91 74110 72660

080 4128 7612



## Why Edgemap

Potable Water and Wastewater facility data play a major role in any Utility industry. Creating GIS Potable Water and Wastewater facility data for water vulnerability, water loss tracking, mainline breaks, water violations, water budgeting, forecast the demand, planning for water recycle, supporting long term supply is very important. Edgemap provides web-based GIS solutions for Analysis, Reports, Dash boards for all GIS data and also help to create different kind of output maps.

Edgemap GIS Team offers a complete utility GIS data solutions such as

- Need Assessment/Analysis
- Designing and creating an effective data model.
- Data capture of large volumes of spatial and non-spatial facilities using our customized applications in ArcGIS and AutoCAD.
- Data Migration of existing database to your specified GIS format.
- Integrating different facilities with a specified GIS layer.
- Engineering drafting services for water treatment plants, pumping stations, Reservoirs, etc.
- Edgemap works with strict timeline and cost effective budget.





# EDGE MAP SOFTWARES

Geographical Information Systems (GIS)

For Electrical



## Benefits

- Asset Inventory and Infrastructure Insights.
- Easily calculate rate of consumption of residential households
- Less turnaround time
- Reduction in labor cost
- Optimizing Field Operations
- Collaborating and Sharing Geospatial Data with other departments
- Sharing Data with Clients, Subcontractors and Managers

## CONTACT US

### Edgemap Softwares

#352, 4<sup>th</sup> Block, 8<sup>th</sup> Main  
Basaveshwaranagar,  
Bangalore-560079



[www.edgemapgis.com](http://www.edgemapgis.com)

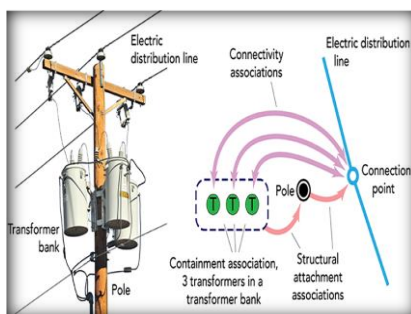
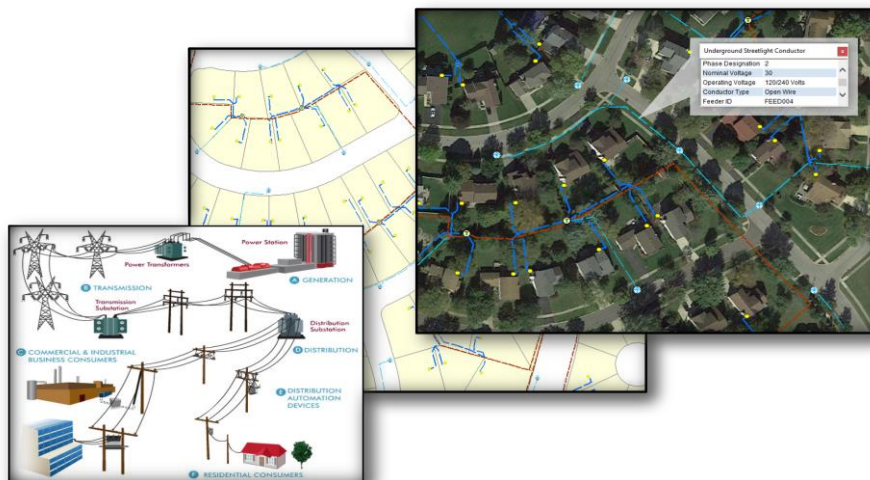


[info@edgemapgis.com](mailto:info@edgemapgis.com)



+91 74110 72660

080 4128 7612



The importance of mapping Electrical data into GIS environment is to provide spatial solutions in a real time manner for quick solutions. In today's world the major problems identified in this Electrical domain are, frequent power failure due to manual and natural disaster, Unequal transmission of load, rupture on the equipment due to improper maintenance, etc., much more. Edgemap offers complete Electrical GIS solutions for Data management and Asset Management. Edgemap specializes in providing customized Web based GIS solutions using customized applications to suit your business operations and planning to reduce the cost and improve work efficiency.

## Why Edgemap

We have highly trained professionals with knowledge of GIS Mapping from different types of sources. Edgemap provides technical support for Managing data in your electricity distribution management system and provide the best GIS solutions for your effective operations and with a maximum cost reduction.

- ✚ Network mapping of electrical Transmission and Distribution system.
- ✚ Digitizing and attributing complete consumer information like, Meter number, Load usage, address and cost. Creating powerful Data Model to store the GIS Data
- ✚ Streamline mapping workflows, support compliance, ensure data quality and client satisfaction.
- ✚ Creating different kinds of maps for Network Analysis And spatial analysis.
- ✚ Edgemap works with strict timeline and cost-effective budget
- ✚ Creating customized applications for easy access and reporting.
- ✚ Web GIS application easy access and cross team collaborations



# EDGEMAP SOFTWARES

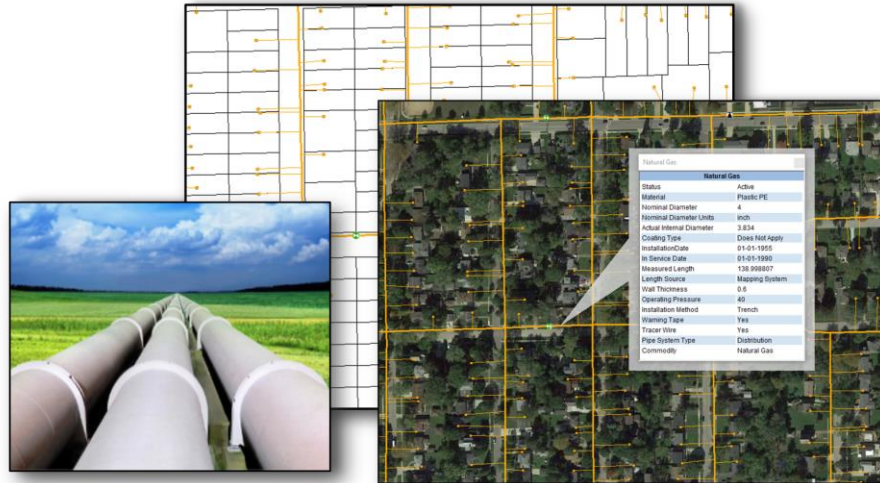
Geographical Information Systems (GIS)

For Oil and Gas



## Benefits

- GIS is being used increasingly for well planning
- Maintenance and monitoring can be done remotely with GIS
- Provides perfect environment to evaluate and grade oil and gas acreage and opportunities.
- Oil and Gas production data can be updated in real-time



## Why Edgemap

Oil and gas are amongst the most important resources that you have. Oil and gas companies are interested in agreements, date of installation, pipe material, pipe maintenance or repair, spatial location of asset and historical data. To achieve all these, Edgemap offers a utility conversion services which are mentioned below to your industry that will help you to improve the cost-efficiency administration and management.

Edgemap GIS Team offers complete Oil & Gas solution services like:

- ✚ Capturing and Data storage of all physical location of each assets from As-built drawings or other sources.
- ✚ Creating a complete distribution pipeline network for Oil & Gas.
- ✚ Integrating all asset current and historical spatial or non-spatial attribute information in a database.
- ✚ Creating automated maps for visualization and decision making
- ✚ Edgemap specializes in the creation, conversion, and maintenance of big volumes of spatial and non-spatial facilities and asset data, using customized applications.

## CONTACT US

### Edgemap Softwares

352, 4<sup>th</sup> Block, 8<sup>th</sup> Main  
Basaveshwaranagar,  
Bangalore-560079



[www.edgemapgis.com](http://www.edgemapgis.com)

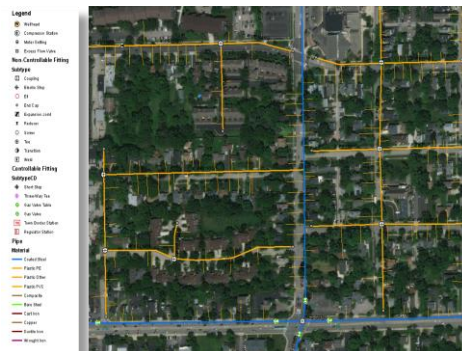


[info@edgemapgis.com](mailto:info@edgemapgis.com)



+91 74110 72660

080 4128 7612







# EDGE MAP SOFTWARES

Geographical Information Systems (GIS)

For Land Administration



## Benefits

- Improves accuracy of real-property assessments
- Provides faster access to records affecting individual rights.
- Improves efficiency of tax-services
- Speeds administration of public regulations



Land policy deals with parcel of land such as (a) agricultural land, (b) forest land, (c) land for housing, infrastructure etc.... It typically includes laws and regulations as well as administrative structures and programs.

Creating and maintaining a record that represents graphically and has information on their ownership such as addresses, dimensions, tax details and other info is essential for any concerned authority or even a private sector.

Edgemap helps in generating digital maps, reports, statistics, etc., which will facilitate land management and planning in order to promote security of land tenure and reduce land disputes.

## Why Edgemap

Edgemap offers complete base map services like:

- Landbase record management.
- Land use and Land cover mapping services.
- Digitizing spatially building footprints and integrating attribution for it.
- Digitizing all kinds of cadastral/parcel maps with integrated spatial/non spatial maps like, property type, usage, area, ownership and others for effective administration and land management
- Web enabled land information's system for revenue and land record Govt., and Private department.

## CONTACT US

### Edgemap Softwares

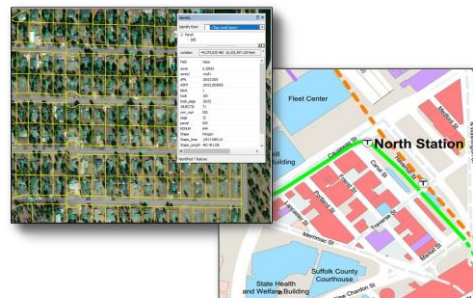
#352, 4<sup>th</sup> Block, 8<sup>th</sup> Main  
Basaveshwaranagar,  
Bangalore-560079

[www.edgemapgis.com](http://www.edgemapgis.com)

[info@edgemapgis.com](mailto:info@edgemapgis.com)

+91 74110 72660

080 4128 7612





# EDGEMAP SOFTWARES

Geographical Information Systems (GIS)

For In Vehicle Monitoring System



## Benefits

- Vehicle GPS Tracking
- Fleet Management
- Fuel Management
- Cost Cutting
- Automated Asset Management
- Vehicle Inspection
- Equipment Management



## Why Edgemap

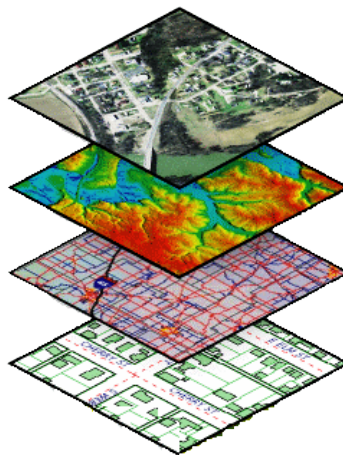
IVMS is a system providing management functions which allows companies to remove or minimize the risks associated with vehicles and goods owned by the companies.

By integrating the system with software and GPS system for whatever sectors, you can streamline and boost the efficiency and cost factor of your operations.

Edgemap can integrate, streamline and maintain your system that will enable you to make more informed decisions that are based on accurate, cross-business information.

Our IVMS solutions can be offered to the following areas

- Transportation and Logistics
- Construction and Equipment's
- All Industries
  - ✚ Utility
  - ✚ Vehicle Rental / Leasing
  - ✚ Oil, Gas and Mining
  - ✚ Construction
  - ✚ Food and Beverages
  - ✚ Education (Schools / colleges)
  - ✚ Private Enterprise and commercial Organizations



## CONTACT US

### Edgemap Softwares

#352, 4<sup>th</sup> Block, 8<sup>th</sup> Main  
Basaveshwaranagar,  
Bangalore-560079

 [www.edgemapgis.com](http://www.edgemapgis.com)

 [info@edgemapgis.com](mailto:info@edgemapgis.com)

 +91 74110 72660

 080 4128 7612